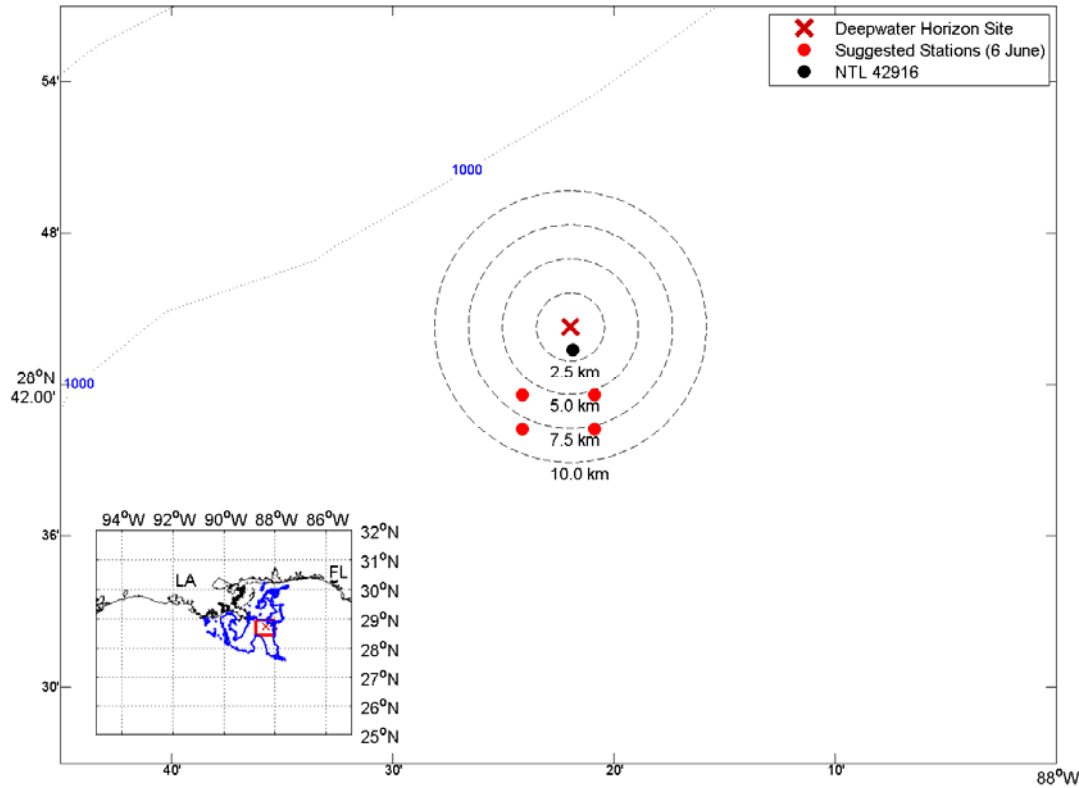


Measured ADCP data at DD3 (NTL 42916) and Discovery Enterprise (NTL 42913) as well as surface and near bottom trajectory data from models (assembled together by University of South Florida) were used in this sample location suggestions. The current has been and will be flowing towards S/SW in the lower water column. The leaking oil most likely will move slowly towards S/SW near the bottom. Our sample suggestion for 6 June is focusing SSE/S/SW of the well. To be specific, the following sample stations are proposed:



**Figure 1 Study area and suggested sample stations. The blue curves are the NOAA outline of oil based on satellites data.**

Suggested stations for 6 June 2010

Station	1	2	3	4
Lon	-88.4022	-88.3479	-88.3479	-88.4022
Lat	28.6933	28.6933	28.6707	28.6707

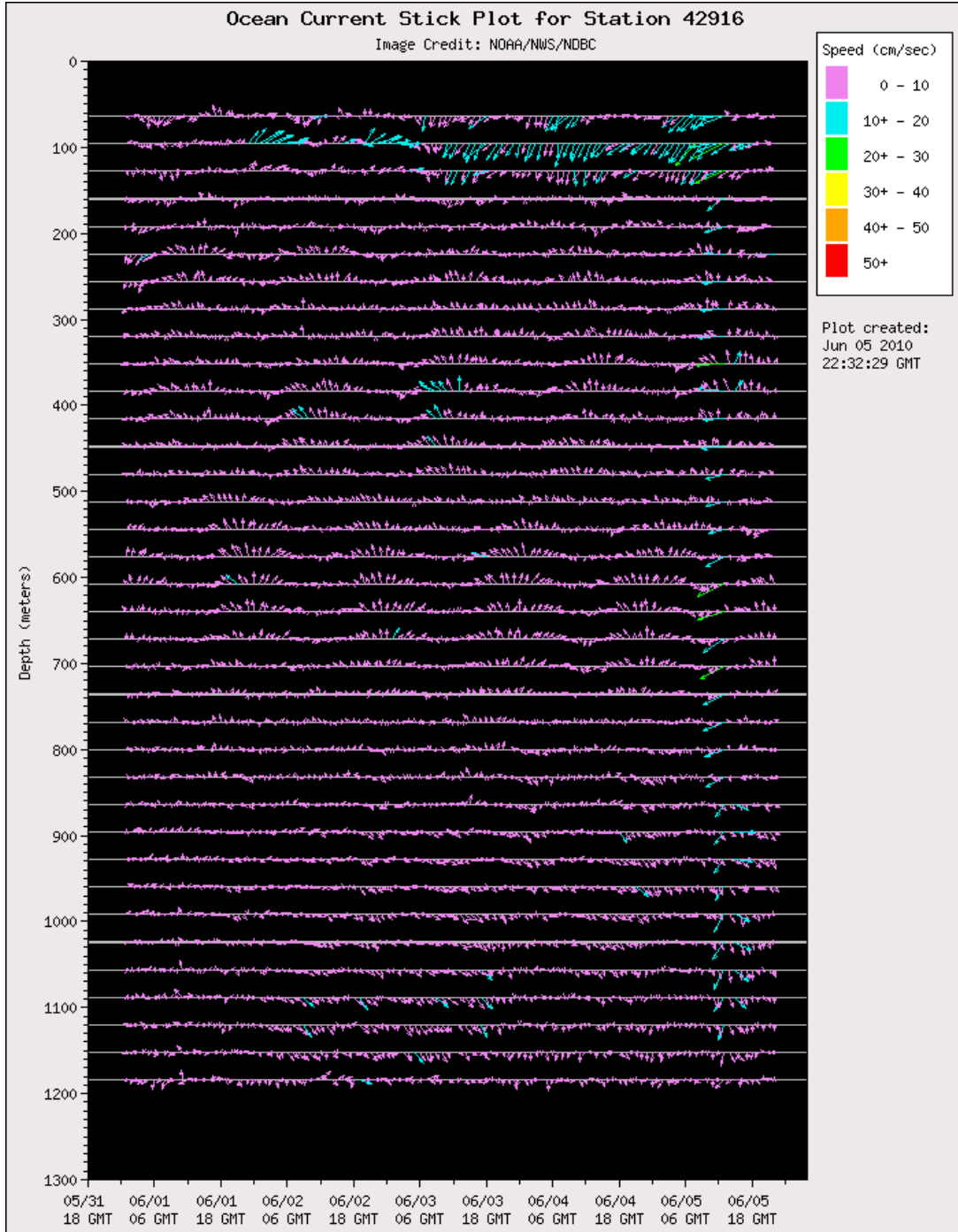


Figure 2 Measured current velocity at DD III (28.72338° N, 88.36404° W).

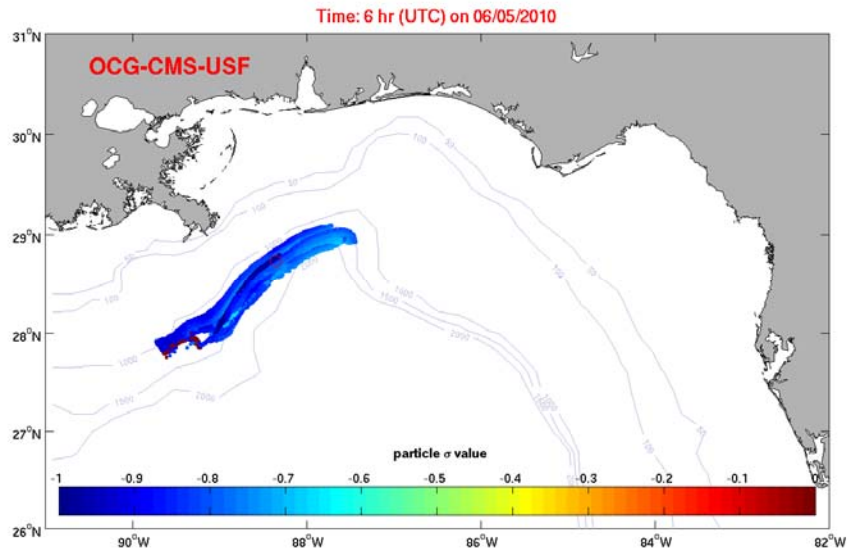


Figure 3 University of South Florida WFSFCS Hindcast Trajectories that Released at 1400m

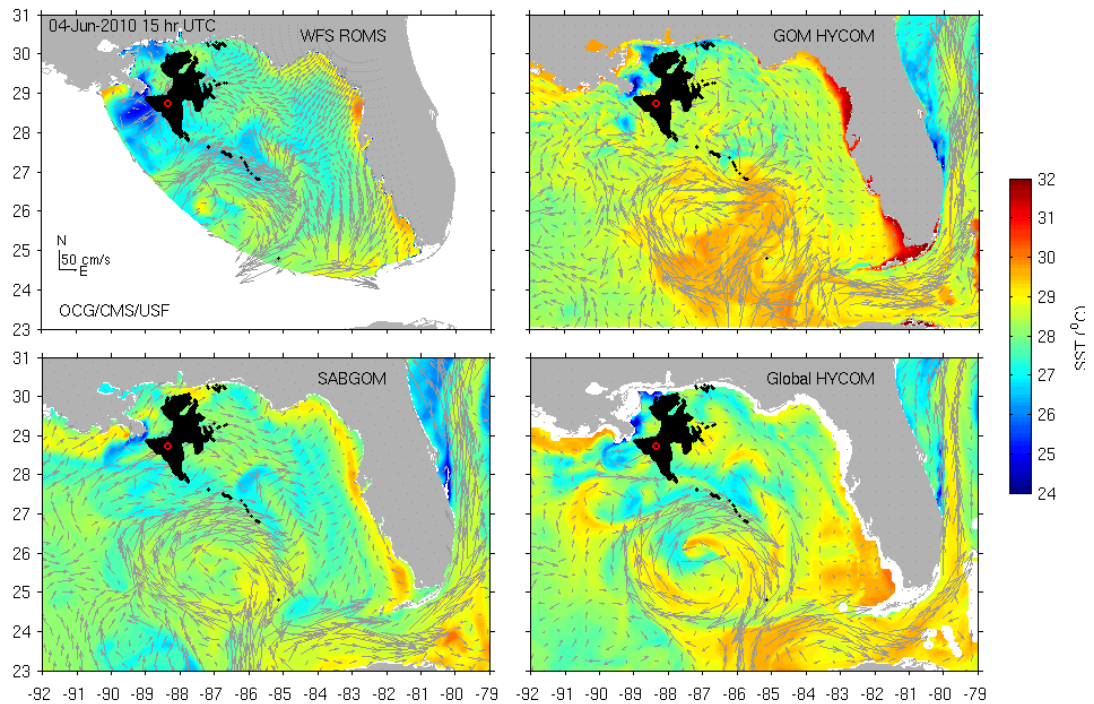


Figure 4 Surface Currents and Sea Surface Temperatures from Four Models Assembled by University of South Florida