

Ryan Chouest daily data transmission and report

Period covered: 21.00 06/10/2010 -21.00 06/11/2010

107 - Nautical miles covered

Vessel science party:

Andrew Ross (Andrew.Ross@csiro.au)
Emma Crooke (Emma.Crooke@csiro.au)
David Fuentes (David.Fuentes@csiro.au)
William Winner (William.Winner@noaa.gov)
Sara Gersbach (Sara.Gersbach@BP.com)

Contact details:

+ 1 337 761 9830 – Sat phone
+ 1 337-761-9830 – Broadband phone ship office
+ 1 337-761-9826 - Broadband phone ship bridge

Cruise notes:

Since 21:00 hrs 06/10/2010 we have conducted number of tests of the casting system to enable 10-150 m deep casts of the pump in order to test the shallow water column and also have transited to the start of our survey area on the western edge of the planned route (figure 1). The casts of the equipment at the previous Weatherbird station (29° 2.00 N 088° 0.000 W) were unsuccessful. The surface was covered by sheens and mousses (Figure 2) results obtained by the sensors in the array were at their maximum value. These values continued through out the night as we stayed on station to flush out the lines. When the sensors were cleaned this morning a waxy brown residue was apparent on the optical windows of the sensors. We attributed this to having to pass the pump through the sheen/mousse. The system was then cleaned and underway data was collected to the first way point on the planned route of the cruise (data to be presented tomorrow). At this point a second cast was performed to find the same result. The lines were then washed with a heavy duty detergent ad there was no change in response of the sensors. We at the moment conclude that passing the lines and pump through the sheen and mousse at the first station is perhaps not the cause of the high readings and that the wrong hose has been purchased. We will continue to investigate the reasons for the contamination and repot any progress. We are now continuing on our original planned route collecting underway data.

Science results and preliminary interpretation:

Planned versus actual route taken cruise 2:

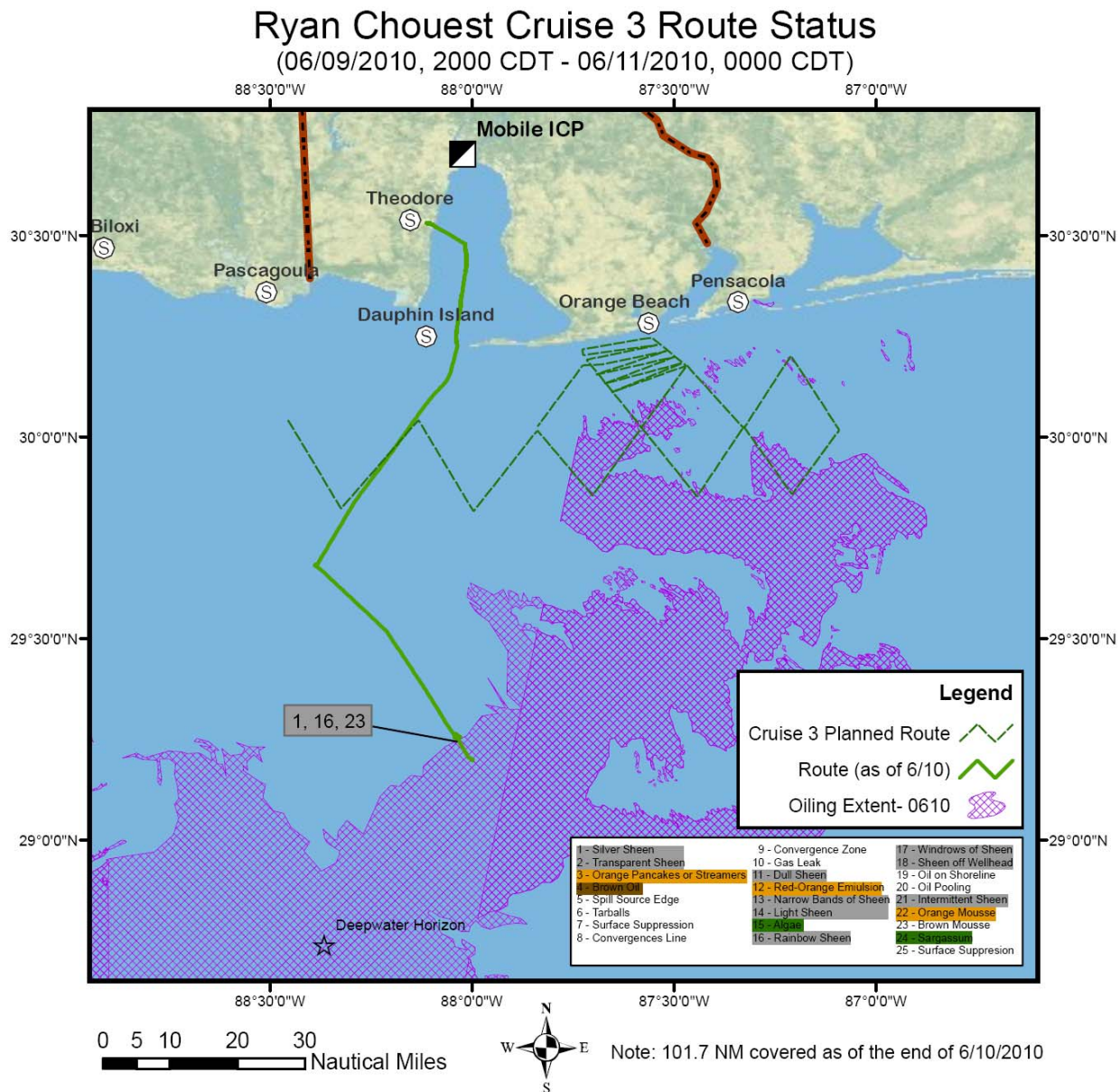


Figure 1: Planned versus actual route course plotted between 20:00 06/09 – 00:00 06/011. Purple shaded area represents outline extent of the slick from 06/10 ERMA composite.

Vessel science operations:

See above

Problems/operational issues:

See above

Planned activities for next 24 hours:

Continue on our planned route with the underway sensor system deployed. We will attempt several more casts of the 150m pump and hose assembly to test other possible contaminant sources.

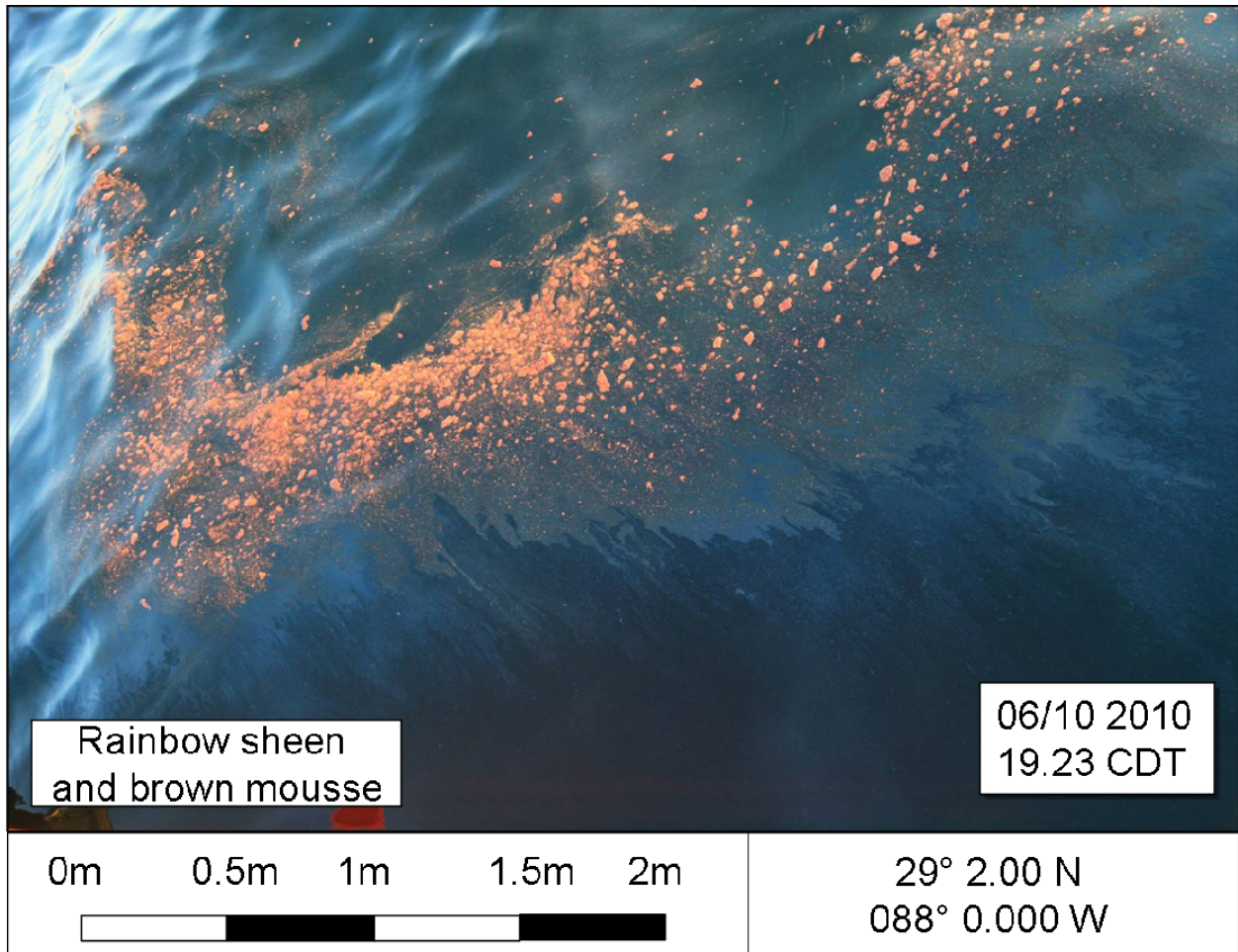


Figure 2. Observed mousse and rainbow sheen at the Weatherbird station.