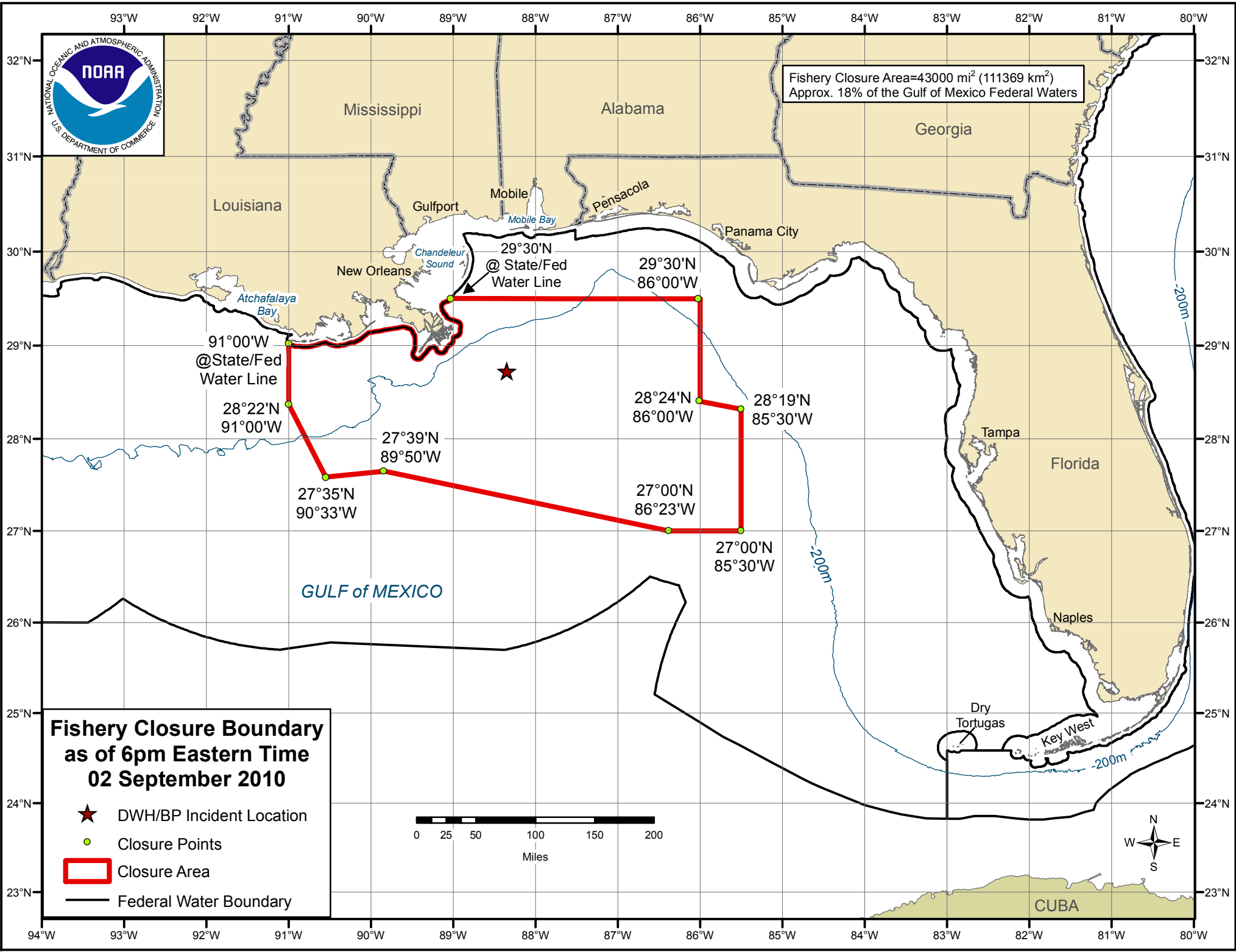




Fishery Closure Area=43000 mi<sup>2</sup> (111369 km<sup>2</sup>)  
Approx. 18% of the Gulf of Mexico Federal Waters



### Fishery Closure Boundary as of 6pm Eastern Time 02 September 2010

- ★ DWH/BP Incident Location
- Closure Points
- ▭ Closure Area
- Federal Water Boundary

