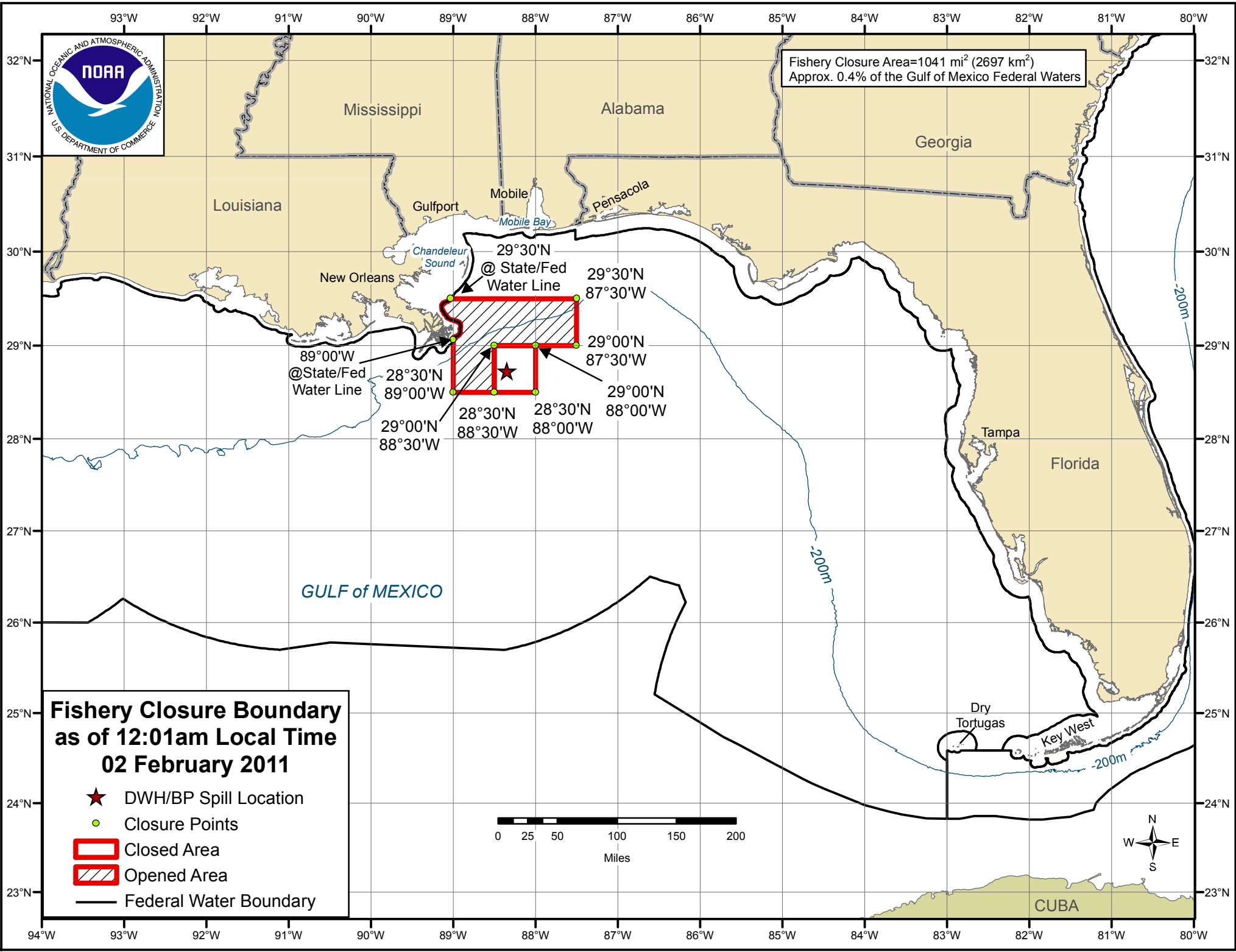


Fishery Closure Area=1041 mi<sup>2</sup> (2697 km<sup>2</sup>)  
Approx. 0.4% of the Gulf of Mexico Federal Waters



### Fishery Closure Boundary as of 12:01am Local Time 02 February 2011

- ★ DWH/BP Spill Location
- Closure Points
- ▭ Closed Area
- ▨ Opened Area
- Federal Water Boundary

